



CATHEDRAL COURT, LONDON, EC4V 5EG

£460 Per Week

1 Bedrooms | 1 Bathrooms | To Let

Property Features

- One Bedroom
- Re-Fitted Bathroom
- 2nd Floor
- Central City Location
- Available Mid January
- Fitted Kitchen
- Furnished
- Security Entry
- Close to St Pauls

AVAILABLE MID JANUARY. Located in the historic area of Carter Lane is this ONE bedroom apartment at CATHEDRAL COURT situated in this residential Period Conversion . This property benefits from high ceilings and tall windows that give a wonderful space and light. This very well located central CITY apartment offers good living space. a fully fitted kitchen, one double bedroom with fitted wardrobes, re-fitted bathrooms w/c. This flat is offered furnished.

Cathedral Court is very close to St Pauls Cathedral in a very central CITY location also close to BLACKFRIARS (District and Circle Line), St PAUL'S (Central Line) MANSION HOUSE (District and Circle) and the new Elizabeth Line stations at MOORGATE and FARRINGDON. Within walking distance are Waitrose, Marks & Spencer and Tesco. Also within easy reach are The River, South Bank, Tate Modern, and the One New Change Shopping Complex with various shops, restaurants and Bars.

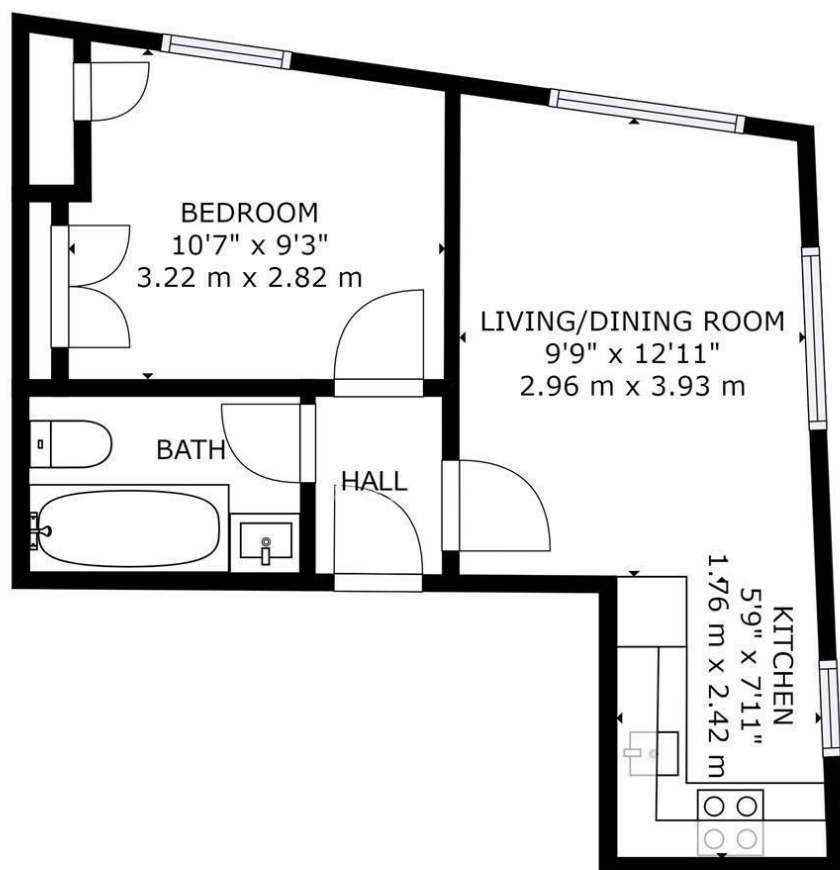
Council Tax Band E: £1,557.20 per annum (25% discount single occupancy)

Deposit: 5 Weeks Rent

No Agency Fee

Tenancy: 12 month contract, 6 Month break clause



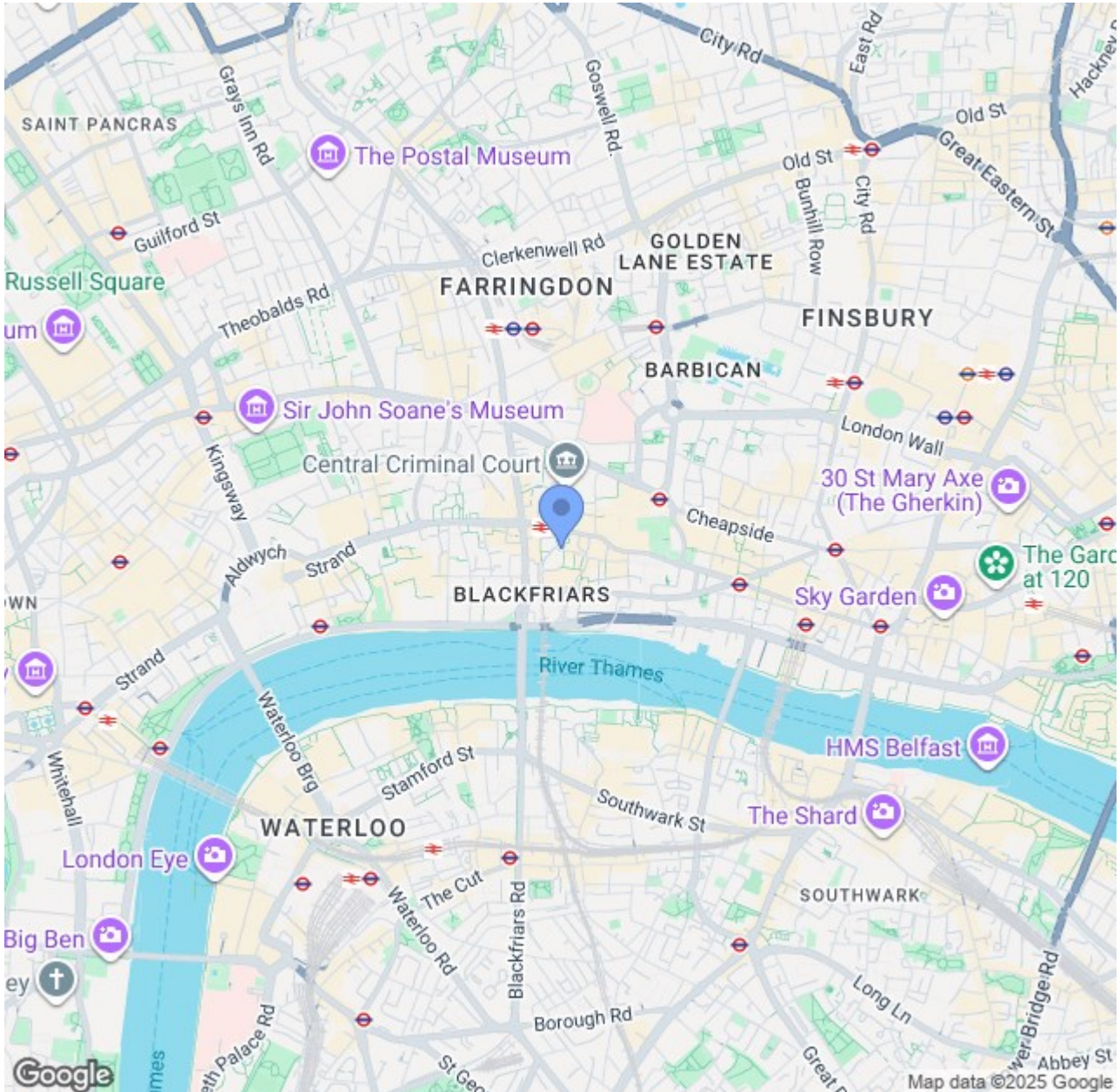


GROSS INTERNAL AREA

TOTAL: 344 sq ft, 32 m²

SIZES AND DIMENSIONS ARE APPROXIMATE, ACTUAL MAY VARY.

POWERED BY
matterport



CONTACT US ABOUT THIS PROPERTY

122 Newgate Street, London, EC1A 7AA

T: 020 7600 0026

F: 020 7600 0025

E: property@scottcity.co.uk



Energy Efficiency Rating		
	Current	Potential
Very energy efficient - lower running costs		
(92-plus) A		
(81-91) B		
(69-80) C		
(55-68) D		
(39-54) E		
(21-38) F		
(1-20) G		
Not energy efficient - higher running costs		
England & Wales	EU Directive 2002/91/EC	